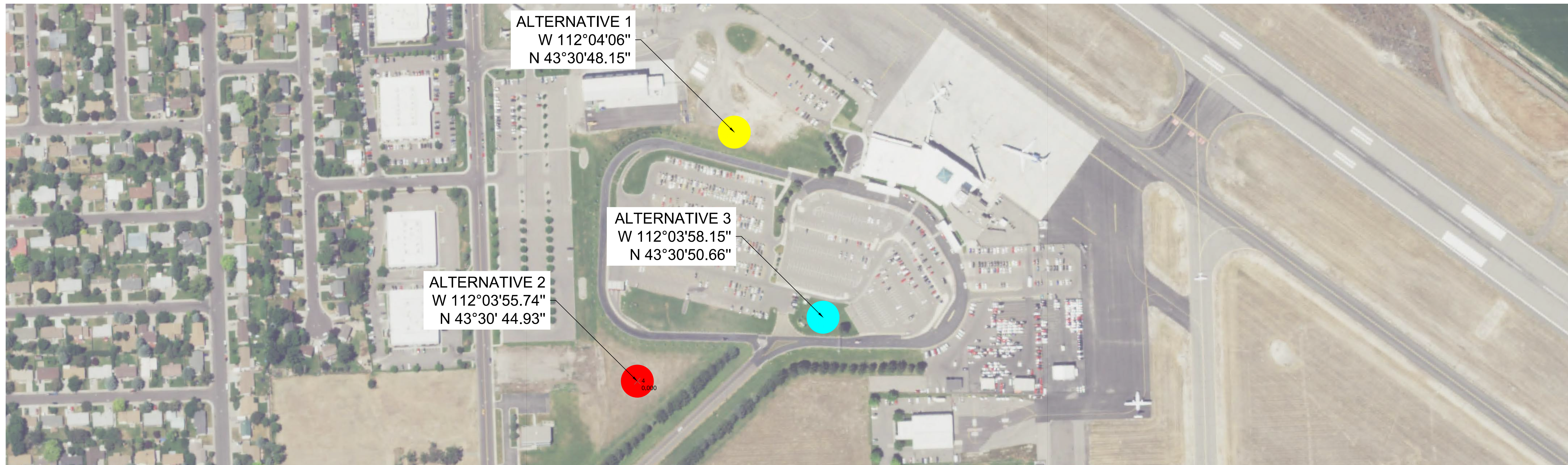


© 2017 T-O ENGINEERS. THIS INSTRUMENT IS THE PROPERTY OF T-O ENGINEERS. ANY REPRODUCTION, REUSE OR MODIFICATION OF THIS INSTRUMENT OR ITS CONTENTS WITHOUT SPECIFIC WRITTEN PERMISSION OF T-O ENGINEERS IS STRICTLY PROHIBITED.



### ALTERNATIVE 1

DESCRIPTION\*:

- TOWER HEIGHT = 128 FEET
- CAB FLOOR HEIGHT = 93 FEET
- SITE ELEVATION = 4,733 FEET
- PENETRATES CFR PART 77 TRANSITIONAL SURFACE OF RUNWAY 2-20

SHADOW STUDY\*\*;

- NO SHADOWING OF MOVEMENT AREA
- NEED TO BE ELEVATED IF CONSTRUCTION OF A PARALLEL TAXIWAY WEST OF RUNWAY 17-35 BECAUSE OF SHADOW AREA

NOTES:

- \* CHARACTERISTICS BASED ON VISIBILITY PERFORMANCES AS DEFINED IN FAA ORDER 6480.4A AND TYPICAL ATCT TEMPLATE. OTHER CRITERIA MAY IMPACT THE DESIGN AND LOCATION OF THE TOWER. GIVEN TOWER HEIGHT INCLUDES ANTENNAS.
- \*\* PRELIMINARY SHADOW STUDY. MUST BE UPDATED ACCORDING TO FUTURE PREFERRED DEVELOPMENTS AT THE AIRPORT AND SITE SURVEY.

### ALTERNATIVE 2

DESCRIPTION\*:

- TOWER HEIGHT = 128 FEET
- CAB FLOOR HEIGHT = 93 FEET
- SITE ELEVATION = 4,733 FEET
- PENETRATES CFR PART 77 TRANSITIONAL SURFACE OF RUNWAY 17-35 (RDC B-I SMALL-VIS)

SHADOW STUDY\*\*;

- SHADOWING OF PART OF TAXIWAY A
- NEED TO BE ELEVATED OVER 30 FEET TO REMOVE SHADOW EFFECT ON TAXIWAY A

### ALTERNATIVE 3

DESCRIPTION\*:

- TOWER HEIGHT = 138 FEET
- CAB FLOOR HEIGHT = 103 FEET
- SITE ELEVATION = 4,732 FEET
- NO PENETRATION OF CFR PART 77 IMAGINARY SURFACES

SHADOW STUDY\*\*;

- NO SHADOWING OF MOVEMENT AREA.
- ALLOW PARALLEL TAXIWAY WEST OF RUNWAY 17-35

**DRAFT**

FILE NAME	DESIGNED	DRAWN	CHECKED	APPROVED

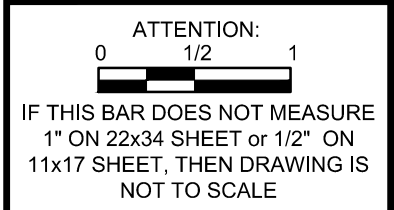
REVISIONS	DATE

NO.

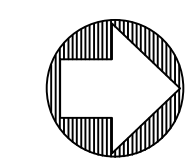
**T-O ENGINEERS**  
CONSULTING ENGINEERS, SURVEYORS & PLANNERS  
2471 S. TITANIUM PLACE  
MERIDIAN, IDAHO 83642-6703  
PHONE: (208) 323-2288  
FAX: (208) 323-2289  
OFFICES ALSO IN:  
COEUR D'ALENE, IDAHO  
SPOKANE, WA  
BOISE, IDAHO

**RUNWAY 17-35 PLANNING STUDY  
IDAHO FALLS REGIONAL AIRPORT  
PRELIMINARY ATCT ALTERNATIVES**



DATE: OCTOBER 2017  
PROJECT: 160105

SHEET 1 OF 1



DRAWING NOT TO SCALE